



PROSPECTUS

B.Ed. Special Education (Learning Disability)

Affiliation with University of Rajasthan, Jaipur

Approved by Rehabilitation Council of India, New Delhi



2021-2022

Director's Message



It is my pleasure to welcome you to the world of Special Education. I hope you will find it exciting and useful. In the present time of all nations across the world are realizing the pathetic condition of children with special needs and their parents. The numbers of such children are increasing day by day. The leaders of our nation are also aware about the new situations emerging in our society. Hence the Central Government enacted several policies and laws for providing quality education, care and protection of their right. Disha – A Resource Centre for the Disabled is participating with Rehabilitation Council of India (RCI), New Delhi and University of Rajasthan (UOR), Jaipur in the shoulder by shoulder efforts for the upliftment of children with special needs by commencing the course in Special Education named B.Ed. Special Education (Learning Disability), B.Ed. Special Education (Intellectual Disability) and Diploma in Education Special Education (Intellectual Disability). We are committed to make this institution as one of the best by building the capacity of our trainees with high academic standards. After the successful completion of the course they can walk in to the areas of higher studies in the field. All the State Governments are appointing B.Ed. Special education and D.Ed. Special education qualification holders as Resource Teachers in each district. There are many special schools all over India that need qualified Special Educators. It has been our constant endeavor to prepare the teacher trainees to build up ability to become creative persons to tackle long range of complex problems in the fields of special education in future. We have to realize that the kind of education we provide for our children is determined overwhelmingly by the kind of men/women we secure as teachers. Disha, based on the above view has recruited efficient teachers with good academic records to impart to our trainees.

Disha is committed to supply qualified and trained teachers recognized for their high standards of education and culture. I am confident that the career in special education will bring tremendous satisfaction of serving a cause in the society and secure your future with a job that motivates towards excellence.

Rainu Singh
Executive Director

About Disha

Disha – ‘A Resource Centre for the Disabled’ is a premier, non-profit organization working in this field since 1995. Disha has the distinction of being the first organization in Rajasthan to provide varied and comprehensive rehabilitation services under one roof. Our motto is *to be a “part” and not “apart”*. With this inclusive approach, it has helped integrate and include numerous people with varied disabilities in several areas of life.

The center aims at helping the differently abled children and young adults to become self-sufficient and self-reliant adults thus helping them to develop their potential to the maximum of their ability, without causing any emotional or physical stress.

DISHA has been constantly awarded by the state and central government for its noble cause towards the society. DISHA has accreditation with the CREDIBILITY ALLIANCE and CAF INDIA and thus ensures complete transparency of its cash flows and good governance.

Vision

- To create a society with equal opportunities for all.
- To facilitate empowerment of the ‘Persons with Disabilities, their families and support services’.
- To provide equal opportunity for rehabilitation through education, vocational training and main streaming training.
- To work with persons with Cerebral Palsy, Mental Challenges and Multiple Disabilities, Our long term goals are Inclusion, Community based Rehabilitation, a fully-fledged Research and Documentation Centre and to add more services to HRD Centre.

Mission

- To contribute to the creation of a society this provides equal opportunity to persons with disability.
- To live with dignity and realize their maximum potential and for the achievement of this goal to develop an institution of excellence and support institution building for such persons, their families and providers of support service.

Disha works through

As an institution, our major activities and services are as follows:

- The Jaipur School
- The Centre for Special Education
- The Centre for Therapies
- The Centre for Vocational Training
- The Centre for Home Management Programme
- The Centre for Mother child Programme
- The Community Outreach Programme
- The Centre for Human Resource Development

The Jaipur School

WE EMPOWER OUR LEARNERS

• By building competency and gaining 21st century skills through four C's of education : Critical Thinking, Creativity, Communication and Collaboration.



CRITICAL THINKING



Creativity



COMMUNICATION



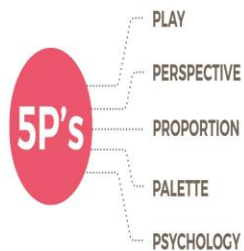
COLLABORATION

- By having classroom experiences based on **Know, Understand, Do** methodology
- By adopting multi sensory and multiple intelligence teaching approach
- By bridging learning deficits by remedial classes
- By keeping technology at the core of teaching

CUSTOMIZED SPACE

The Jeypore School strives to form a connection between the learning space and the child through cognitively smart designs. We operate from 8000 Sq feet space at Nirman Nagar, Jaipur, which is exclusively designed by a world renowned expert based on the 5 Ps concept : **Play, Perspective, Proportion, Palette, Psychology**.

The space is unique and we are proud to have Kotak Mahindra Bank as our partner for creating this one of its kind educational environment.



www.thejeyporeschool.org

M : +91 70737 77337 E : info@thejeyporeschool.org

A : The Jeypore School, Kotak Disha Centre for Alternative Education, 3rd Floor,
Disha Foundation T.N. Mishra Marg, Nirman Nagar-C, Jaipur - 302019, India

An initiative of :



Supported by :



Construction CSR :



THE JEYPORE SCHOOL

For Alternative Education

WE BUILD SKILLS
BRIDGE LEARNING GAPS
CREATE COMPETENCIES

WHY US ?

Because the education system should **work for the child** rather than the child working for the education system.



ABOUT US

The Jaypore School for Alternative Education provides students with an unconventional pathway of education and learning life skills. The school focuses on student's **Psychological, Physical, Cognitive and Social Wellbeing**.

- For students with diverse needs
- A self-paced learning environment
- Personalized educational experience
- Skills based education

OUR PHILOSOPHY

Individual differences (e.g., personality, learning styles, and life experiences) can be covered only by the active, intentional, and ongoing engagement with diversity. We do it through various ways that increase awareness, content knowledge, cognitive sophistication, and empathic understanding of the complex methods, individuals interact within systems and institutions. We, The Jaypore School, expand academic diversity to a level where equity, inclusion and competency are the basis to nurture our next generation. Our mantra is **Education for Life**.



WHAT CONTRIBUTES TO STUDENTS' WELL-BEING AT SCHOOL?

PSYCHOLOGICAL
Students' life satisfaction, sense of purpose, self-awareness, and absence of emotional problems.

PHYSICAL
Adapting a healthy lifestyle and students' overall health.

COGNITIVE
Students' proficiency in applying what they know to solve problems.

SOCIAL
Students' relationship with family, peers and teachers & students' feelings about their social life.

WE CATER TO STUDENTS OF AGE 8 - 16 of diverse needs

- Slow learners
- Children with learning challenges and health concerns
- Gifted students
- Children, coming from mainstream schools, with low self esteem, emotional trauma, lack of interest and other social emotional issues
- Students willing to adopt open/skill based learning system

WE FOLLOW

- Activity based in-house standardized curriculum
- NIOS Board syllabus
- Principles of equity and inclusion
- Intricate and differentiated lesson planning

WE PROVIDE

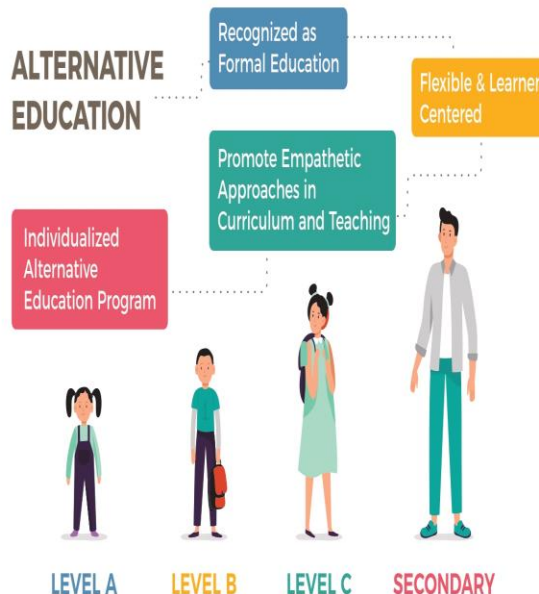
- Safe and empathetic environment
- Technology driven learning
- Skill based education



WHY ALTERNATIVE EDUCATION?

BECAUSE ONE MODEL DOES NOT FIT ALL

ALTERNATIVE EDUCATION



LEVEL A

LEVEL B

LEVEL C

SECONDARY

*Levels are equivalent to Grade 3, 5, 8 and 10th of CBSE board. Students between 8 to 16 years may enter the school in any grade and appear for the level appropriate exam as per his/her readiness.

SUBJECTS

- English
- Hindi
- Maths
- EVS
- Social Science
- Science
- Basic Computer
- Art & Craft

ADDITIONAL SUBJECTS

- Environment
- Citizenship
- Sports
- Yoga



THERAPEUTIC INTERVENTION

We have a fully equipped therapy center and team of experts on the board who are trained to access and integrate the therapeutic needs of students, if there is any, and weave therapy interventions seamlessly into the day to day learning activities of students.



**SPEECH
THERAPY**



**BEHAVIOUR
THERAPY**



**OCCUPATION
THERAPY**



**PHYSIO-
THERAPY**

The Centre for Special Education

The main objective of CSE program is to enhance the potential of each child by giving him/her an environment which facilitates his/her learning. To achieve this objective, students are divided into the various groups.

- A. **Early intervention:** For 3-6 years child of the above stated disability
- B. **Academic:** Students who can comprehend the formal education system under NIOS(National Institute of Open School
- C. **Functional Academic:** To develop the basic skills to live their life independently with dignity, within the community
- D. **Recreational Group:** For students with Severe disabilities with an objective to give them a conducive environment for growth through play way method.

These groups include the facilities and co-curricular activities like games and sports, art and craft, dance, music, theatre, computer and library.

The Centre for Therapies

It is given to the children having Cerebral Palsy and developmental delay which has exceptional benefits to improve their movement and muscular strength. It works closely with Centre for Special Education. It includes following therapies:

- a. **Physiotherapy:** It works towards medico social rehabilitation of the beneficiaries to provide them with efficient services. It works closely with all other therapy services.
- b. **Speech Therapy:** It provides assessment and rehabilitation of children with speech, language, communication, Locomotors and swallowing difficulties.
- c. **Occupational Therapy:** It works for facilitating independent living, including feeding, mobility, transferring, mobility, toileting and skill development activities.
- d. **Sensory Integration:** It is a part of Occupational therapy. It is provided generally to children having ASD (Autism Spectrum Disorder) and children with sensory and behavior imbalance. Through this children are helped to balance their behavior and seven senses (Auditory, Visual, Tactile, Taste, Smell, Vestibular and Proprioception)
- e. **Aquatic Therapy:** It is a therapeutic facility provided in the water environment. It helped the children in improving gait pattern, coordination, strength and concentration

The Centre for Vocational Training

It is a planned program of the students with mild to moderate disabilities. The goal is to help them learn functional academic and then train them in certain skills, develop interpersonal communication, supervisory the team building skills and prepares them for industry defined work which will lead to economic independence and rehabilitation. The vocational center comprises of 5 units with 30 young adults.

Vocational training is given to the students who are above the age of 18 years. The areas of training cover Stitching, Cooking, Craft, painting, handling of machines like popcorn making, baking oven, laminating, paper cutting, and spiral binding & photocopying. The products are sold during the various exhibitions in the city.

The Centre for Home Management Programme

Apart from the children and young adults at Disha, services are extended to the persons with disabilities, from outside too. A major part of this program is counseling and training parents of the children with disabilities. The emphasis given on building the capacity of the women who can take care of their children with special needs. The counseling is also done to give special attention to the girl child. The parents come to Disha to take Home Management Program from all over the state. So far more than 500 children and their families have been benefitted.

The Centre for Mother Child Programme

This is a three months comprehensive course for the mothers of special children wherein they are given training to deal with the disability of the child with hands on exercise and theory.

The Community Outreach Programme

Reaching out to persons with disabilities specifically women in the rural and sub urban areas to spread awareness and advocacy along with counseling and consultation. Moving a step ahead Disha has taken an initiative of training the Grassroots level workers (ANM, ASHA sahyoginis, Aanganwadi Workers) for the Early Intervention Services for various disabilities.

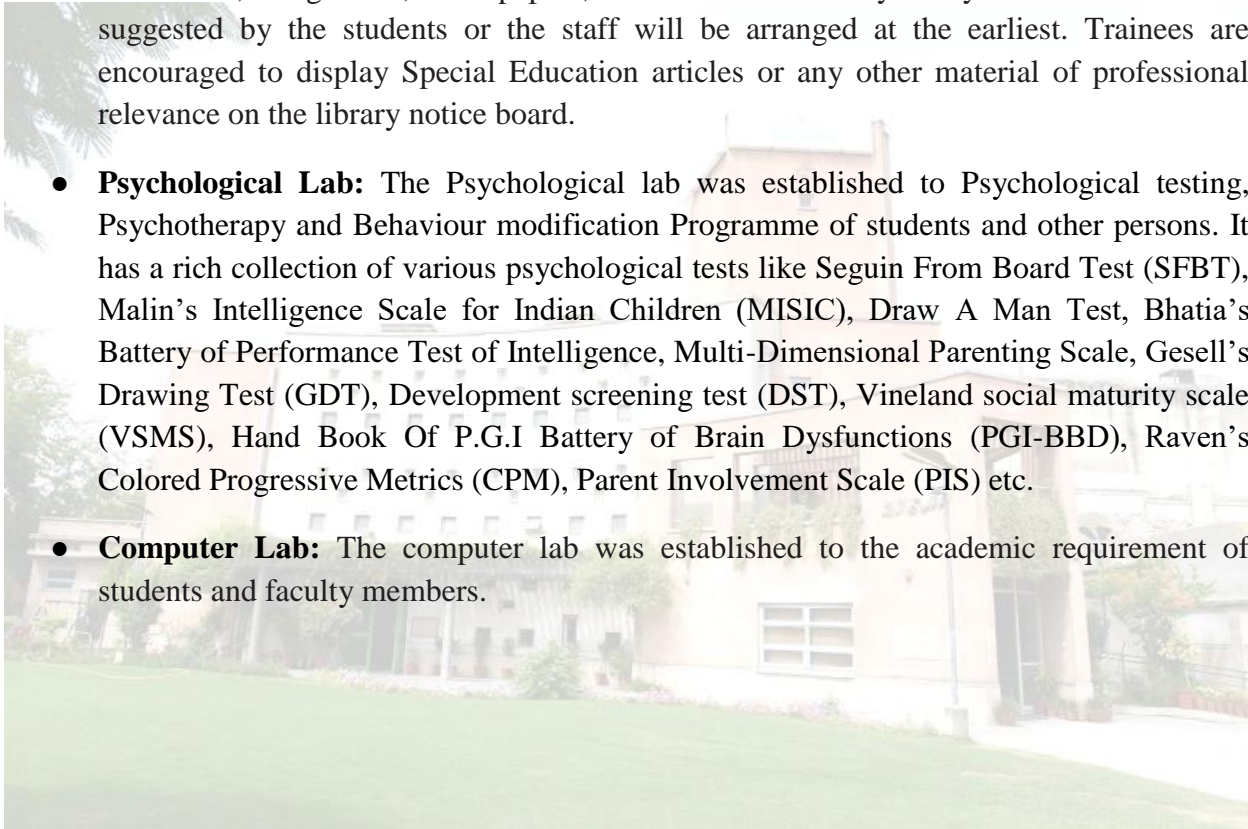
The Centre for Human Resource Development

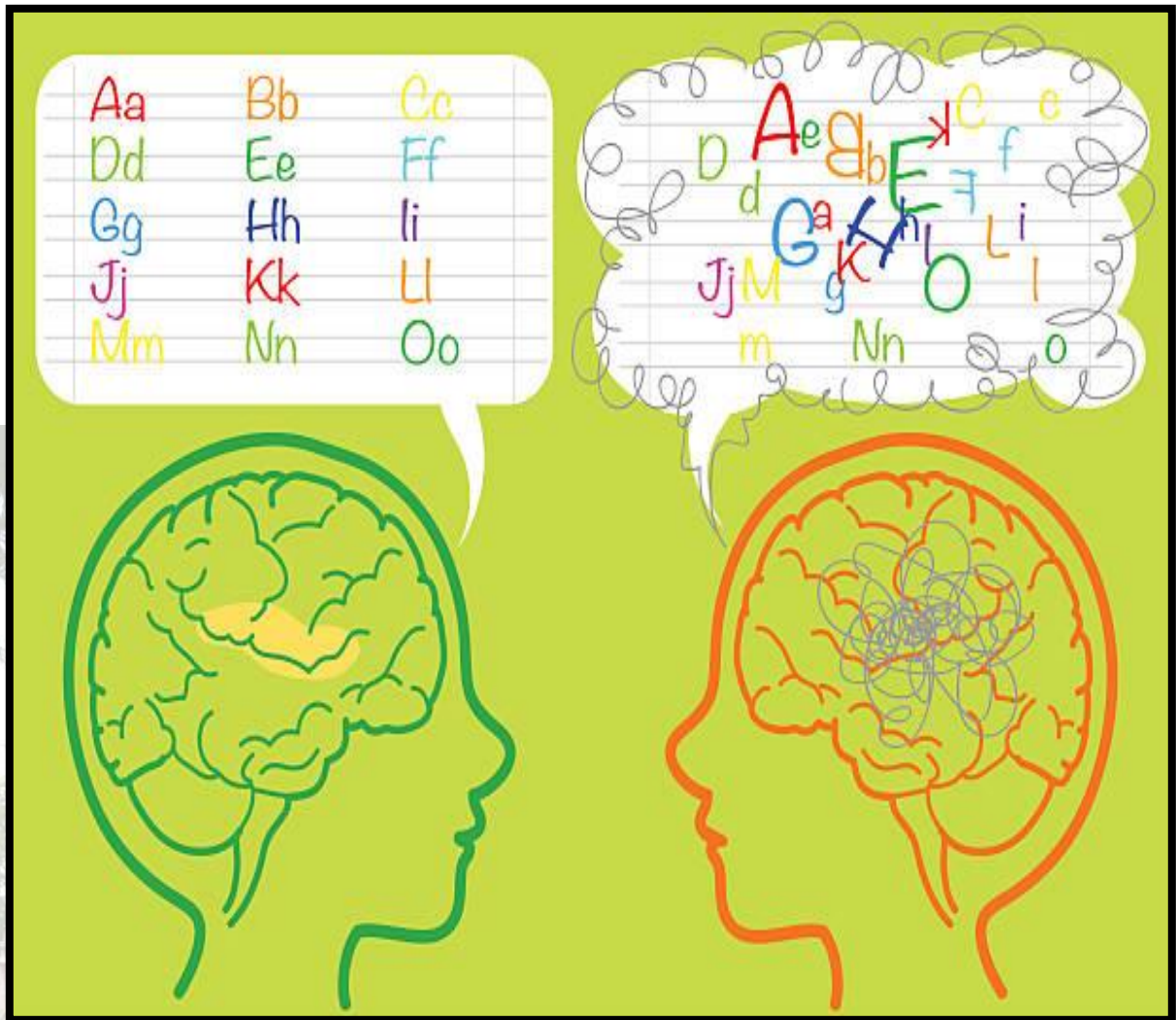
Disha - A Resource Centre for the Disabled has pioneered the discipline of Rehabilitation & Special Education and has provided leadership to institutions across the state for Rehabilitation & Special Education both at the school and college level. The college currently offers:

- B.Ed. Special Education (Learning Disability)
- B.Ed. Special Education (Intellectual Disability)
- D.Ed. Special Education (Intellectual Disability)

Other Facilities

- **Resource Room:** It is a room where a special education programme can be delivered to a student with a disability. It is for the student who needs some special instruction in an individualized or small group setting for a portion of the day. It has a rich collection of various need appropriate teaching learning materials.
- **Library:** The library was established primarily to meet the academic requirement of students and faculty members. The library has a rich collection of printed as well as electronic resources including books national and international journals, policy documents, magazines, newspapers, and internet facility. Any academic material suggested by the students or the staff will be arranged at the earliest. Trainees are encouraged to display Special Education articles or any other material of professional relevance on the library notice board.
- **Psychological Lab:** The Psychological lab was established to Psychological testing, Psychotherapy and Behaviour modification Programme of students and other persons. It has a rich collection of various psychological tests like Seguin Form Board Test (SFBT), Malin's Intelligence Scale for Indian Children (MISIC), Draw A Man Test, Bhatia's Battery of Performance Test of Intelligence, Multi-Dimensional Parenting Scale, Gesell's Drawing Test (GDT), Development screening test (DST), Vineland social maturity scale (VSMS), Hand Book Of P.G.I Battery of Brain Dysfunctions (PGI-BBD), Raven's Colored Progressive Metrics (CPM), Parent Involvement Scale (PIS) etc.
- **Computer Lab:** The computer lab was established to the academic requirement of students and faculty members.





B.Ed. in Special Education (LEARNING DISABILITY)

Session 2021-2022

2 years | Online and On Campus | Mentored Learning

Why B.Ed. in Special Education (LD)?

Do you think you are someone who wants to?

- Help children in the classroom with disabilities?
- Are you someone who can empathise and understand the needs of those who get neglected in mainstream education?
- Are you someone who is seeking opportunities in mainstream and special schools in Pvt. and Govt. sector in India and abroad?

If yes, then this is the course for you.

2 in every 40 students of all public schools are identified as having a Learning Disability. Under the National Education Policy 2020, knowledge on how to teach children with special needs will be an integral skill taught to all future teachers.

The Central Board of Secondary Education (CBSE) had already made it mandatory for all affiliated schools to appoint a special educator. This directive has also been necessitated due to strict guidelines of the Right to Education Act (RTE).

What is B.Ed. in Special Education (LD)?

This two-year B.Ed. Special Education (LD) programme prepares human resources to acquire knowledge and develop competencies and skills to impart education and training effectively to children with disabilities. The course can be pursued after graduation in any stream. Learners of this course gain all necessary knowledge, attitude, and skills to effectively teach children/ students with certain learning disabilities, especially in schools.





What makes this course unique?

Disha Resource Centre for Multiple Disabilities is Jaipur based not for profit organisation, founded in 1995 with a vision to educate, enable and uplift children and young adults with disabilities. It has the distinction of being the first organization in Rajasthan to provide varied and comprehensive rehabilitation services under one roof. For over 25 years we have been working with the single aim of paving a path for our children to become equally participating voices in mainstream society.

- First ever and only course of its kind in introduced in Rajasthan by Disha
- Technology based teaching methods
- Highly skilled and qualified faculty
- Practical, hands on experience with students with learning disability in a world class LD school
- Aligned with National Education Policy 2020

Objectives of the Courses

The main aim of the courses B.Ed.Spl.Ed.(LD) is to prepare the students for the following:

- To identify the special needs of children and develop confidence in them so that they can realize their potentials and abilities to become self-dependent and live a life of self-respect, dignity and freedom.
- To develop skills and competencies to cater to the needs of children with disabilities in general and special class settings in particular, in cognitive, affective and skill domains.
- To equip them to handle children with special needs in an inclusive setup.

- Impart education to children with special needs depending on their identified abilities and potentials.
- To acquire knowledge about change in the prevailing and emerging trends and dynamics of special education and special needs.

Career Opportunities in

- ☐ Early Intervention Centres
- ☐ Mainstream Schools
- ☐ Inclusive and Special Need Schools
- ☐ Consultant in educational setups
- ☐ Vocational & rehabilitation centres
- ☐ NGO working in disability sector
- ☐ Clinical Setups
- ☐ Personal remedial clinics

General Instructions

- Candidates are requested to read the prospectus before filling in the Application Form. The prospectus provides general information and is subject to change without any prior information.
- Candidates should fill the application form legibly in their own hand writing, using a ball point pen, in capital letters only.
- Candidates should enclose a self-addressed envelope and past sufficient stamps on it for registered post.
- Candidates should personally collect the admit card from the institute.
- Candidates have to report at the venue half an hour before the commencement of the Interview.
- No T.A., D.A. will be paid for appearing in the interview.
- The admission is only provisional and is subject to confirmation by the university.
- The institute will not be responsible for non-receipt or late receipt of application forms / interview memos and or any other correspondence regarding admission.
- In all matters of admission, the decision of the university will be final.
- Admission to the programme will be canceled at any time if any information provided by the candidate at the time of admission is found to be false or if there is an act of in subordination, irregularity or indiscipline.

Eligibility Criteria

Candidates who have successfully completed 3 years degree course from a recognized university with minimum of 50% marks are eligible for admission. In case of SC/ST/OBC/SBC the cutoff point will be 45% marks.

Age

There is no upper age limit prescribed.

Duration

Two years.

Number of Seats

The total number of seats for each year of the course will be 30 maximum. The reservation and relaxation for SC/ST/OBC/PWD and other categories shall be as per the rules of the Central Government / State Government, whichever is applicable.

Award of Certificate

The B.Ed. Special Education (Learning Disability) course certificate will be issued by the University of Rajasthan, Jaipur

Admission procedure

Admission will be based on merit. Prior to selection the candidate will be required to appear for an interview as per the rules.

Medium of Instruction and examination

The medium of Instruction and examination will be both in English & Hindi.

Working hours

Working hours will be 8:30 am to 3:00 pm, from Monday to Friday and 8:30 am to 1:30 pm on Saturday.

Examination

The Course pattern will be based on a Semester Pattern. The External examination for both Theory and Practical will be held at the end of the academic year.

General framework of the course

Semester wise Curriculum Framework for B.Ed.Spl.Ed.(LD)

Course Code	Course Title	Weight age / Marks
Semester – I (July to December)		
A1	Human Growth and Development	100
A2	Contemporary India and Education	100
B7	Introduction to Sensory Disabilities (VI, HI, Deaf-Blind)	50
B8	Introduction to Neuro Developmental Disabilities (LD,MR/ID,ASD)	50
B9	Introduction to Loco motor and Multiple Disabilities (CP, MD)	50
C12	Assessment and Identification of Needs	100
E1	Practical: Cross disability and inclusion	50
	Total	500
Semester – II (January To June)		
A3	Learning Teaching & Assessment	100
A4	Pedagogy of Teaching (Special Reference to Disability) Any one	100
A5	Pedagogy of Teaching (Special Reference to Disability) Any one	100
B6	Inclusive Education	50
C13	Curriculum Designing, Adaptation and Evaluation	100
E2	Practical: Disability specialization	50
	Total	500
Semester – III (July to December)		
C14	Educational Intervention and Teaching Strategies	100
C15	Technology and Disability	100
C16	Psycho Social and Family Issues	50
D17	Reading and Reflecting on Texts	50
D18	Drama and Art in Education / Performing and Visual Arts	50
E2	Practical: Disability specialization	100
F1	Main disability special school (Related to Area C)	100
	Total	550
Semester – IV (January to June)		
B10	Skill Based Optional Course (Cross Disability and Inclusion) ANY ONE	50
B11	Skill Based Optional Course (Disability Specialization) ANY ONE	50
D19	Basic Research & Basic Statistic	50

E1	Practical: Cross disability and inclusion	100
F2	Other disability special school	100
F3	Inclusive school	100
	Total	450
	Grand Total of Semester (1to IV)	2000

Fee Structure

S.N.	Cost Head	Fee Amount (Per annum)
1	Tuition Fees	55000
2	Library Fees	6000
3	Lab practicals and Resources	6000
4	Digital Resources	3000
5	Total	70,000 /-

One time refundable caution money at the time of admission Rs. 10,000 /-

For Further Query

Please contact us at:

Phone: 7073777337 or write to us at: disha@dishafoundation.org

Application form charges:

- B.Ed. Spl.Ed. (LD) – Rs. 500/-

Bank Details for fee Submission

A/c Name : DISHA

Bank Name : STATE BANK OF INDIA

Bank Branch : Shyam Nagar, Jaipur

Account No. : 51010155590

IFSC Code : SBIN0031768

Contact No. for payment enquiry: 9314203075

Paytm number - 07073777337

How to Apply



General rules and regulations for the B.Ed and D.Ed students after admission to any of the above courses.

1. All students shall abide by the rules and regulations laid down by the institution.
2. All trainees should reach the institute not later than 8.30 am. They will not leave the premises before 3.00 pm.
In case of emergency they should take written permission from the Course Coordinator and or Ex.Director.
3. All trainees should follow the dress code which will be specified after admission.
4. Students should proactively participate in all institutional activities.
5. Students should keep their classroom and other surroundings neat and clean.
6. Students are prohibited from organizing students meetings, entertainment, collecting money etc. without the permission of the Course Coordinator and should be in knowledge of Director.
7. Students should read the notice board for daily updates.
8. Visitors for students will not be allowed, in case of emergency only a short meeting at the reception is permitted with prior permission of Course Coordinator/Director.
9. Strict silence should be observed in the classroom and institute premises during working hours.
10. Students should be punctual to the classes and will need to maintain **80%** attendance both in theory & practical. In case of illness, medical certificate should be produced immediately after resumption to classes.
11. Application for leave must be submitted two days in advance except in case of illness or other unforeseen circumstances. In case of illness, medical certificate should be produced immediately after resumption of classes.
12. Parents or guardians must promptly notify any changes in their address or phone number.
13. Mobile phones should be switched off and submitted or locked in the locker in the institute.
14. Trainees are strictly prohibited from consuming any kind of intoxicants (*cigarettes, panmasala, tobacco, liquor etc.*) Any defaulter would face the consequences.
15. In case of any student being found absent for more than 16 days without information or notice, his/her admission will be cancelled.
16. If students are found gossiping, being indecent or found misbehaving with any of the staff or fellow students they are liable to be suspended from the classes or their admission may stand cancelled
17. No fee will be refunded if the **candidat** of the student is declared cancelled on the pretext of percentage of qualifying exam, false information, recognition of qualifying University/degree/course and the like.
18. The students may be required to stay overtime, depending on the need for covering additional topics or

Disha – A Resource Centre for the Disabled,

Pandit T. N. Mishra Marg, Nirman Nagar – C, Jaipur, Rajasthan 302019

ADMISSION FORM

- Read instructions before filling the form
- Please tick () wherever applicable

COURSE APPLIED FOR:

- B.Ed. Spl.Ed. (ID) []
- B.Ed. Spl.Ed. (LD) []

Latest Passport
Size Photograph

Total No. of
Enclosures

PERSONAL DETAILS:

Name of the candidate: Mr./Ms./Mrs.: _____

Gender: Male / Female / Other

Category: GEN / SC / ST / OBC / SBC

Date of Birth : _____ Age : _____

Place of Birth : _____ Nationality : _____

Aadhar No.: _____ D.O.A.: _____

Correspondence Address : _____

District: _____ City: _____ State: _____ Pin Code: _____

Permanent Address : _____

District: _____ City: _____ State: _____ Pin Code: _____

Contact No.: _____ Email id: _____

FAMILY PROFILE:

Person	Name as per SSC Certificate	Qualification	Occupation	Contact No.
Father				
Mother				
Husband/Wife				

Whether parent/sibling of person with any disability? Yes/No

EDUCATION PROFILE:

Status of Qualifying Exam: _____

Appearing/Passed: _____

Name of the University: _____

Address: _____

Exam Passed	Name of the School/College	University/ Board	Year of Passing/ Appearing	Aggregate % Marks	Subjects	Medium of Instructions
10 th						
12 th						
Graduation						
Post-Graduation						
Others						
Others						

EXPERIENCE PROFILE:

S. No.	Name & Address of the institution/ Organization	Nature of Job	Total No. of years/ month
1.			
2.			

State your career objectives for pursuing this course. (If the space is not enough enclose a separate A4 sheet.)

Signature of Coordinator

Signature of Head of Institute

Signature of Candidate

.....

To be filled by the Account Dept.:

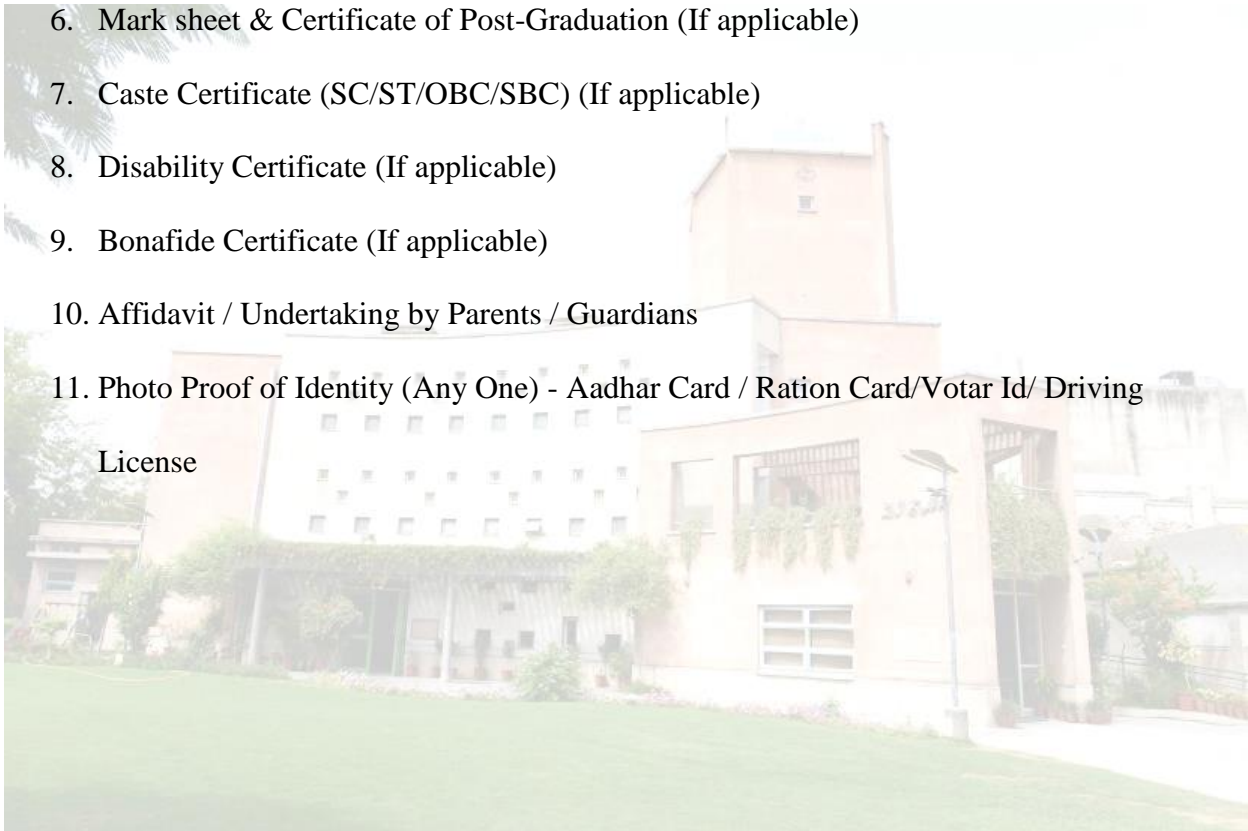
Charges Received Rs. Receipt No. Date

Caution Money Rs. Receipt No. Date

Signature of Accountant

Checklist of the documents to be submitted:-

1. Self-attested photograph on the Application form
2. Passport size photograph (04)
3. Mark sheet & Certificate of 10th
4. Mark sheet & Certificate of 12th
5. Mark sheet & Certificate of Graduation
6. Mark sheet & Certificate of Post-Graduation (If applicable)
7. Caste Certificate (SC/ST/OBC/SBC) (If applicable)
8. Disability Certificate (If applicable)
9. Bonafide Certificate (If applicable)
10. Affidavit / Undertaking by Parents / Guardians
11. Photo Proof of Identity (Any One) - Aadhar Card / Ration Card/Votar Id/ Driving License



शपथपत्र

मै..... पुत्र/पुत्रीश्री..... आयु.....
निवासी.....

.....शपथपूर्वकघोषणाकरता/करतीहूँकि:-

- यहकिमैबी.एड.एस.ई.(एल.डी.)/ बी.एड.एस.ई.(आई.डी.) कोर्समेंसत्रकाछात्र/छात्रादिशा-
एरिसोर्ससेन्टरफॉरदडिसेबल्ट, निर्माणनगर-
सी,जयपुरमेंनियमितरूपसेअध्यनरतहूँ।इसमहाविद्यालय/संस्थानकेअतिरिक्तअन्यकिसीमहाविद्यालय/विश्वविद्यालयमेंनियमितरूपसे
अध्ययनरतनहींहूँऔरनहींकिसीराजकीयकार्यमेंअपनीनियमितसेवाएंदेरहा/रहीहूँ।
अर्थातउक्तप्रशिक्षणकेदौरानकहींपरकोईराजकीयकार्यएवंअध्ययननहींकररहा/रहीहूँ।
- यहकियदिमेरीमहाविद्यालय/संस्थानमें80
प्रतिशतसेकमउपस्थितिहोगीतोमहाविद्यालय/संस्थानकोमेराप्रवेशरददकरनेकाआधिकारहोगा।
- यहकिमेरीमार्कशीटकीपुनः
जाँचयापुनर्मूल्यांकनकरानेपरमेरेअंकोंमेंकमीहोतीहैतोमहाविद्यालय/संस्थानकोइसबाबतकोईजिम्मेदारीनहींहोगी,सारीजिम्मेदारीमेरी
स्वयंकीहोगी।
- यहकिमेरीउपाधियदिराजस्थानविश्वविद्यालय/बोर्ड/RCI-NBER-
NIEPMDद्वारास्वीकारनहींकीजातीहै,तोइसबाबतजिम्मेदारीमेरीस्वयंकीहोगी,उक्तमहाविद्यालय/संस्थानकीकिसीप्रकारकीकोईजिम्मे
दारीनहींहोगी।
- यहकियदिमेरेचरित्रयाव्यवहारसेसम्बंधितकोईकमीपाईजातीहैतथामेरेद्वाराअनुशासनहीनतायादुर्व्यवहारकियाजाताहैतोउक्तमहाविद्या
लय/संस्थानकोआधिकारहोगा,किवहमेराप्रवेशरददकरसके।
- यहकियदिकिसीकारणवशमेराप्रवेशरददकियाजाताहै,यामेरेद्वारापाठ्यक्रम,अवधिसमाप्तिसेपूर्वछोड़ाजाताहै,
तोमहाविद्यालय/संस्थानद्वाराकोईभीयूजरचार्ज,एडमिशनचार्ज,कॉशनमनीवापिसनहींलौटायाजायेगा।
- यहकिमैंमानसिकरूपसेपूर्णतयास्वस्थहूँ।
- यदिमेरेद्वारायामेरेकिसीकृत्यद्वारामहाविद्यालय/संस्थानकिसम्पत्तिकोकोईनुकसानपहुंचताहैतोइसकाव्ययवहनकरनेकेलिएमैंजिम्मेदार
रहूँगा/रहूंगी।
- यहकिमैंकिसीलाभकारीकार्य,व्यवसाययासरकारीपदइत्यादिपरकार्यरतनहींहूँ।
- यहकिमेरेखिलाफकिसीभीअदालतयाथानेमेंकोईअपराधिकमुकदमानहींचलरहाहै।
- यहकिमेरेद्वाराइससंदर्भमेंकोईतथ्यनहींछिपायागयाहै।
- यहकियदिमेरेद्वारामहाविद्यालय/संस्थानसमय (8:30am to 03:00pm)
केअतिरिक्तवमहाविद्यालय/संस्थानकेंपसकेबाहरकिसीभीप्रकारकीअसामाजिकयाअवांछनीयकार्यएवंवारदातमेंसंलिप्तहोनापायाजा
ताहैतोमहाविद्यालय/संस्थानकोइसबाबतकोईजिम्मेदारीनहींहोगी,सारीजिम्मेदारीमेरा/मेरीस्वयंकाहोगा/कीहोगी।
- यहकिउक्तसमस्तबिन्दुओंमेंकमीएवंगलतीकेआधारपरमैंस्वयंजिम्मेदाररहूँगा/रहूंगी।

शपथग्रहिता

सत्यापन

मै..... पुत्र/पुत्रीश्री..... आयु.....
निवासी.....

शपथपूर्वकसत्यापितकरता/करतीहूँकिशपथपत्रमेंअंकितसभीतथ्यक्रम.

सं.

1

से13तकदीर्घज्ञानकारीमेरीनिजीज्ञानमेंसहीऔरसत्यहै।इसमेंकुछभीछिपायानहींगयाहै।

ईश्वरमेरीमददकरे।

दिनांक:-

स्थान:-

सत्यापनकर्ता



Course: B.Ed. Special Education (Learning Disability)

Duration: 2 year

Eligibility: Graduation with 50% (Any Stream)

Seats: 30

